

*Jarrell  
Independent  
School  
District*



Demographic  
Report  
Spring 2016

*Learn from Yesterday...  
Understand Today...  
Plan for Tomorrow*



TEMPLETON  
DEMOGRAPHICS



# Economic Conditions – Austin Area (March 2016)

**4.1%**

38,700 new jobs  
National rate 2.0%



**Job Growth**

**Unemployment Rate**



U.S. 5.1%  
Texas 4.5%  
Austin MSA 3.1%  
Austin 2.7%

**-0.2%**

**11,540**

109 more  
than 2014



**Annualized Home Starts**



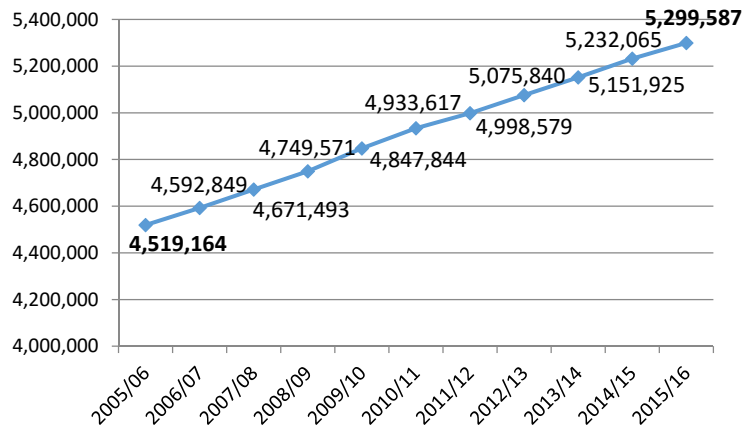


# Texas Enrollment Trends

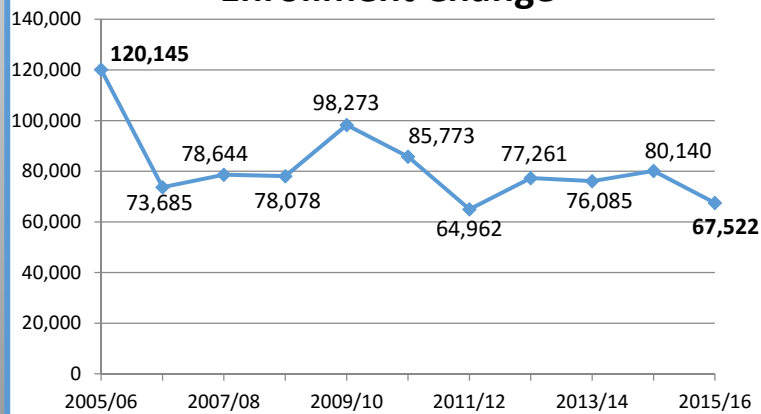
## 2015/16 State Enrollment

Total Enrollment 5,299,587  
 Total Growth 67,522

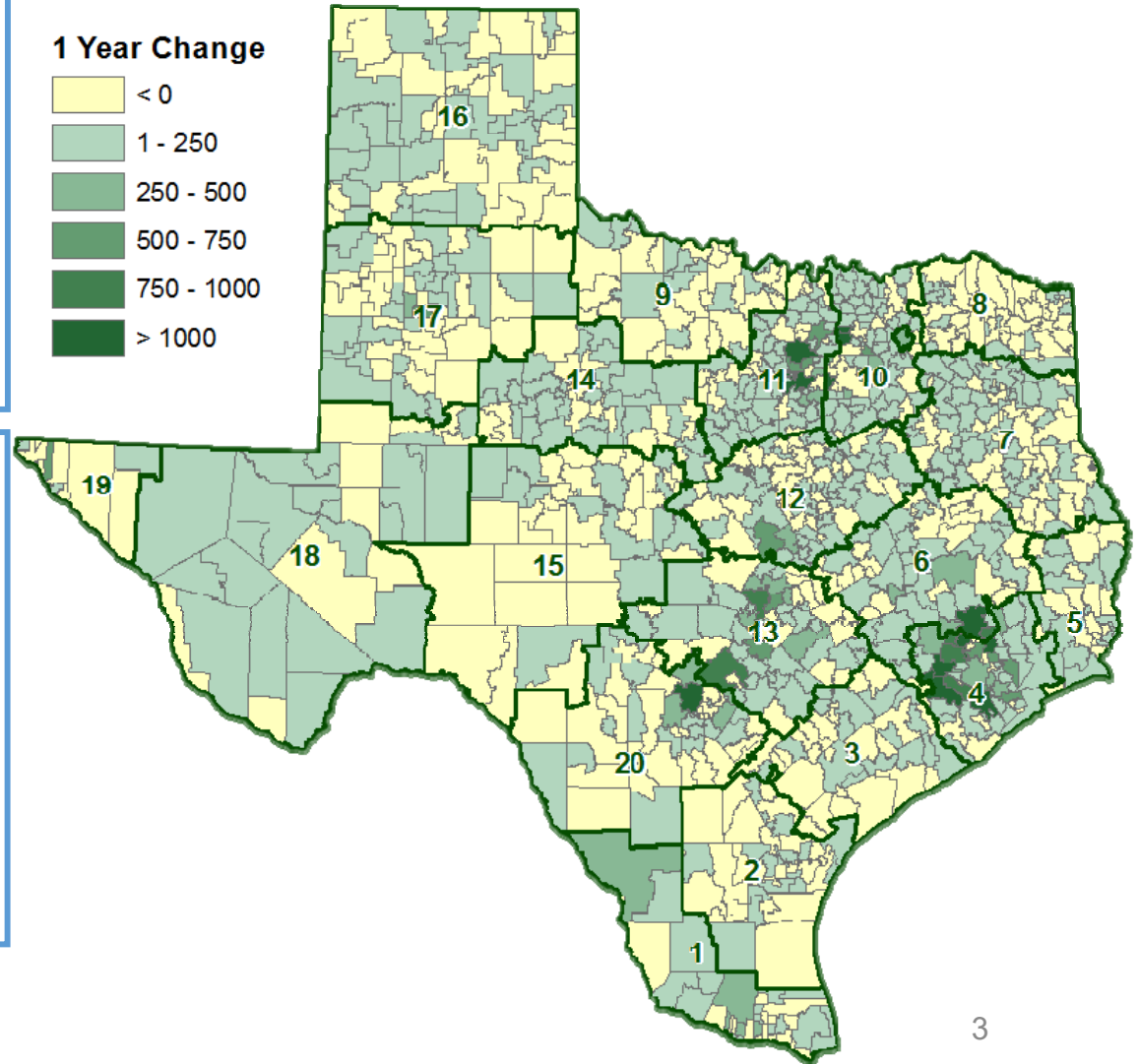
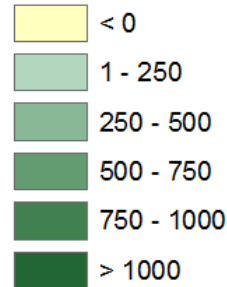
### Total State Enrollment



### Enrollment Change



### 1 Year Change





# Texas Regional Comparison

REGION	Total Enrollment				1-YEAR		5-YEAR	
	2005/06	2010/11	2014/15	2015/16	CHANGE	PERCENT	CHANGE	PERCENT
1	363,256	409,469	423,921	427,637	3,716	0.9%	18,168	4.7%
2	106,787	105,008	105,597	101,749	-3,848	-3.6%	-3,259	-3.1%
3	53,909	52,620	54,371	54,486	115	0.2%	1,866	3.5%
4	1,003,970	1,092,548	1,174,942	1,194,113	19,171	1.7%	101,565	9.7%
5	80,636	80,438	81,806	82,045	239	0.3%	1,607	2.0%
6	154,402	171,733	185,402	190,136	4,734	2.7%	18,403	11.2%
7	163,958	169,455	171,512	172,647	1,135	0.7%	3,192	1.9%
8	56,986	56,866	56,442	61,360	4,918	8.7%	4,494	7.9%
9	39,846	38,485	37,910	37,642	-268	-0.7%	-843	-2.2%
10	683,009	749,836	812,655	823,929	11,274	1.5%	74,093	10.2%
11	486,879	541,969	571,114	578,886	7,772	1.4%	36,917	7.1%
12	143,243	156,571	170,011	171,152	1,141	0.7%	14,581	9.7%
13	311,529	377,724	396,228	403,796	7,568	2.0%	26,072	7.3%
14	44,676	52,376	59,997	58,714	-1,283	-2.3%	6,338	13.1%
15	48,909	48,163	49,969	50,344	375	0.8%	2,181	4.6%
16	78,968	84,670	86,346	86,468	122	0.1%	1,798	2.2%
17	78,501	81,354	84,299	84,986	687	0.8%	3,632	4.6%
18	74,635	78,038	87,906	88,297	391	0.5%	10,259	13.3%
19	171,587	182,133	179,755	179,449	-306	-0.2%	-2,684	-1.5%
20	373,478	404,161	441,882	451,751	9,869	2.3%	47,590	12.3%
<b>STATE</b>	<b>4,519,164</b>	<b>4,933,617</b>	<b>5,232,065</b>	<b>5,299,587</b>	<b>67,522</b>	<b>1.3%</b>	<b>365,970</b>	<b>7.7%</b>

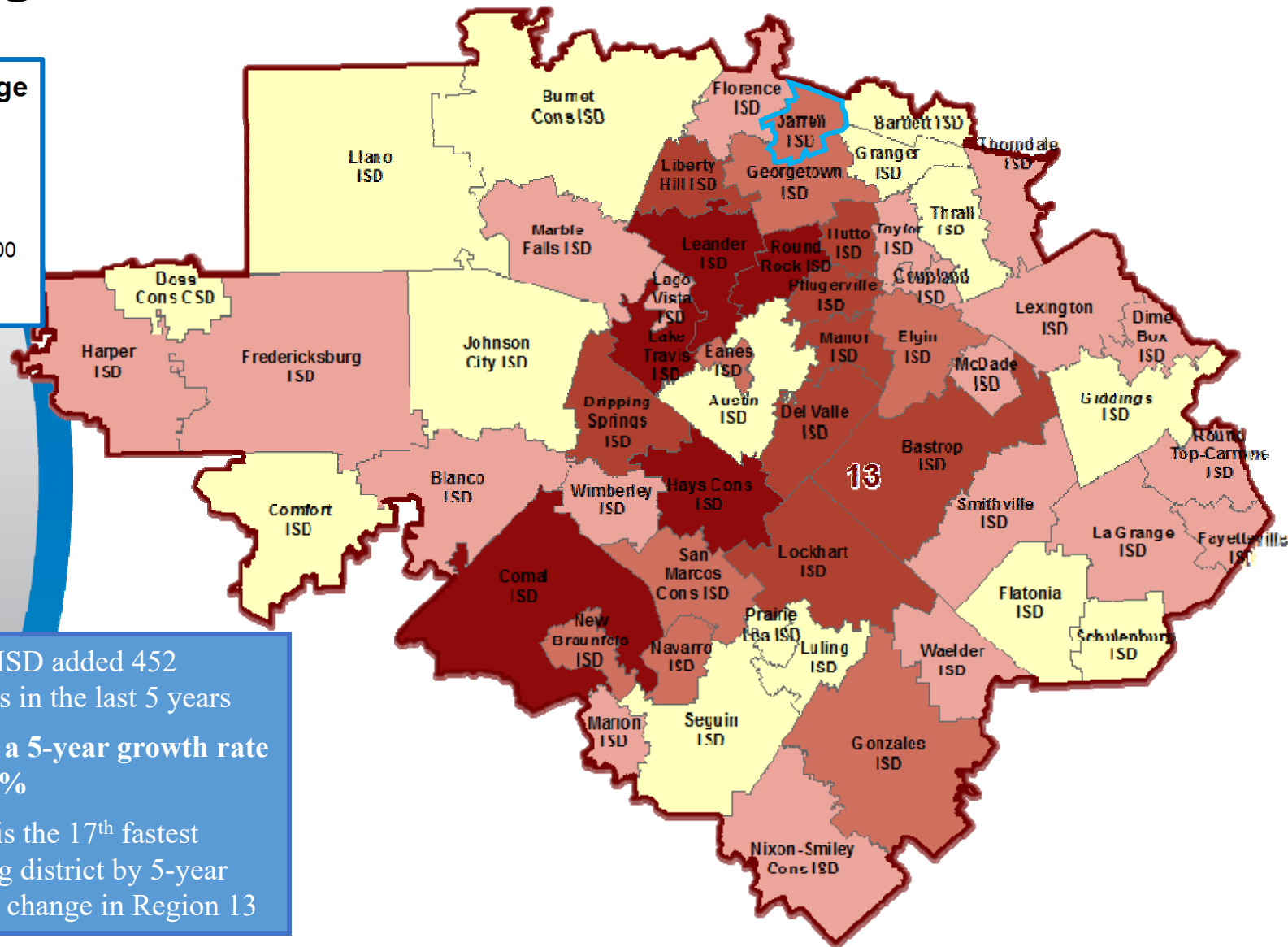
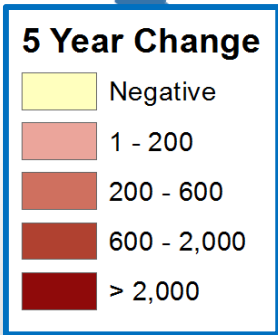
\*Greenville ISD with 5,222 students moved from Region 10 to Region 8 in 2015/16

	Highest activity in the category
	Second highest activity in the category
	Third highest activity in the category





# Region 13 Enrollment Trends



- Jarrell ISD added 452 students in the last 5 years
- This is a 5-year growth rate of 46.4%
- Jarrell is the 17<sup>th</sup> fastest growing district by 5-year student change in Region 13





# Austin New Home Ranking Report

ISD Ranked by Annual Closings – 1Q16

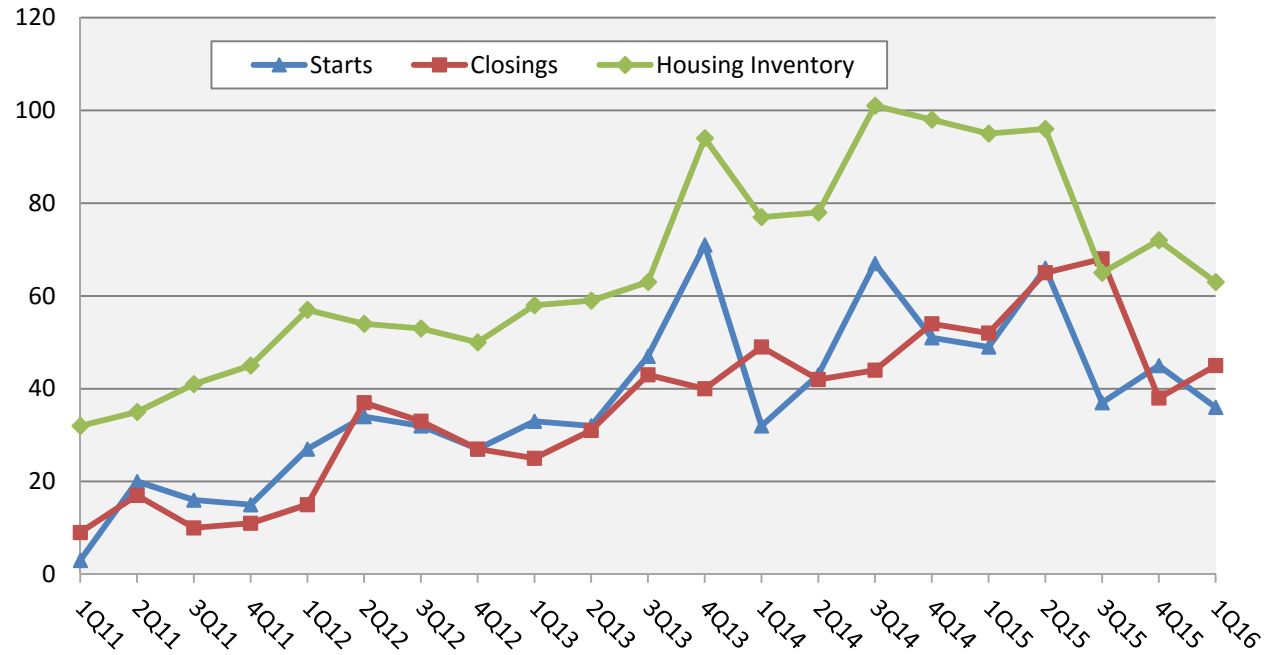
Rank	District Name	Annual Starts	Annual Closings	VDL	Future
1	Leander ISD	1,935	1,940	3,582	12,313
2	Hays CISD	1,645	1,381	1,508	20,246
3	Round Rock ISD	1,236	1,247	1,812	3,143
4	Austin ISD	1,384	1,162	1,619	12,232
5	Pflugerville ISD	1,111	977	1,388	13,567
6	Georgetown ISD	1,131	960	1,581	17,467
7	Hutto ISD	746	738	1,203	3,900
8	Lake Travis ISD	599	656	2,167	2,536
9	Manor ISD	740	583	934	16,348
10	Del Valle ISD	620	392	833	32,273
11	Liberty Hill ISD	418	361	1,344	5,654
12	Dripping Springs ISD	362	336	1,106	3,693
<b>13</b>	<b>Jarrell ISD</b>	<b>184</b>	<b>216</b>	<b>260</b>	<b>7,395</b>
14	Elgin ISD	96	127	120	5,957
15	Bastrop ISD	73	111	1,374	17,924
16	San Marcos ISD	111	106	104	8,481
17	Lockhart ISD	74	95	17	1,441
18	Lago Vista ISD	47	57	547	3,273
19	Taylor ISD	39	30	102	486
20	Luling ISD	48	28	12	0





# New Housing Activity

## Jarrell ISD



Starts	2011	2012	2013	2014	2015	2016
1Q	3	27	33	32	49	36
2Q	20	34	32	43	66	
3Q	16	32	47	67	37	
4Q	15	27	71	51	45	
Total	54	120	183	193	197	36

Closings	2011	2012	2013	2014	2015	2016
1Q	9	15	25	49	52	45
2Q	17	37	31	42	65	
3Q	10	33	43	44	68	
4Q	11	27	40	54	38	
Total	47	112	139	189	223	45

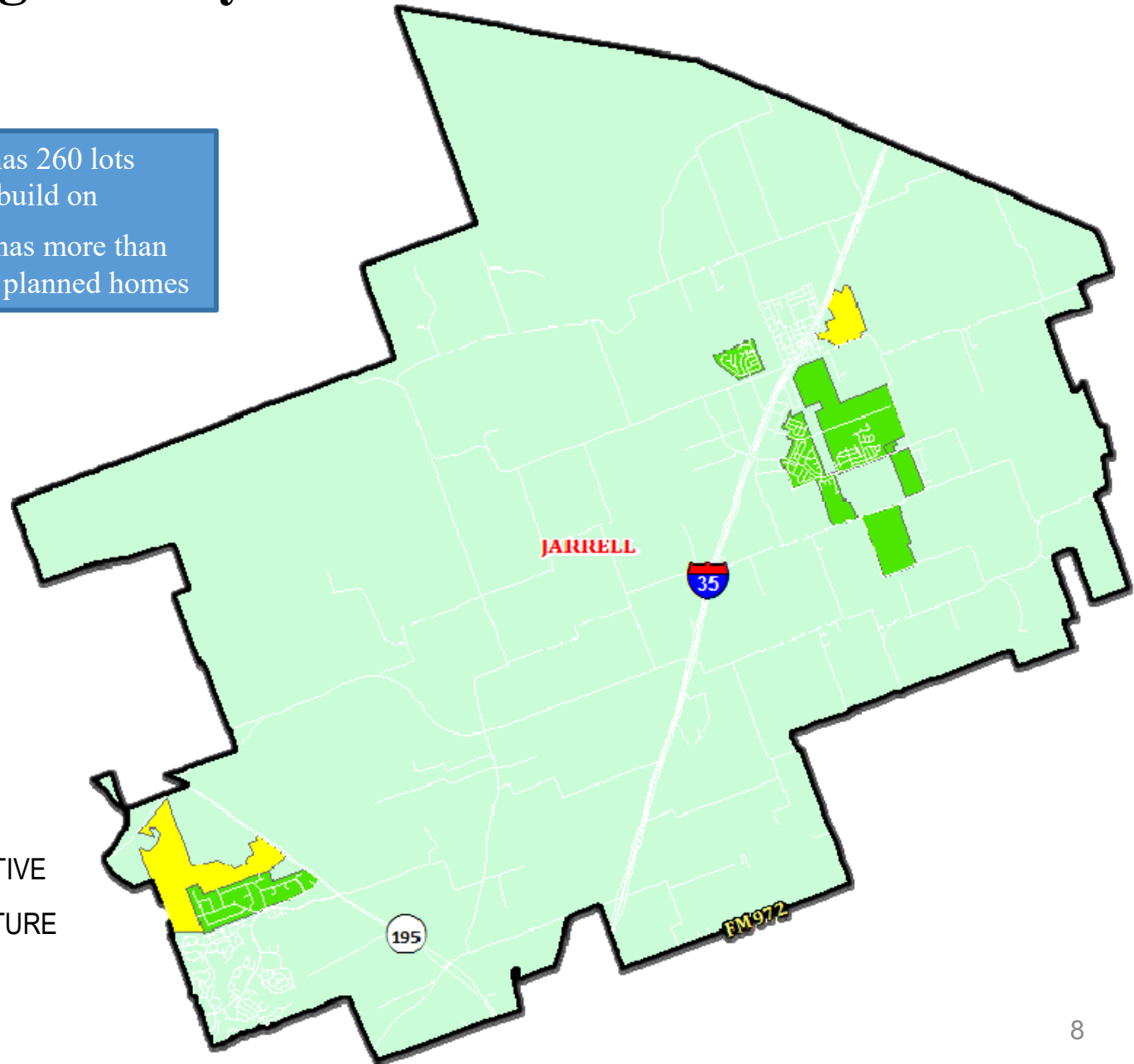
- Jarrell ISD started more than 190 new homes for the second straight year
- New home closings reached 223 units in 2015, a rise of 18% over 2014
- New home inventory is low due to a high number of recent closings, expect new home starts to pick up in 2Q16





# Housing Activity Overview

- Jarrell ISD has 260 lots available to build on
- The district has more than 7,000 future planned homes





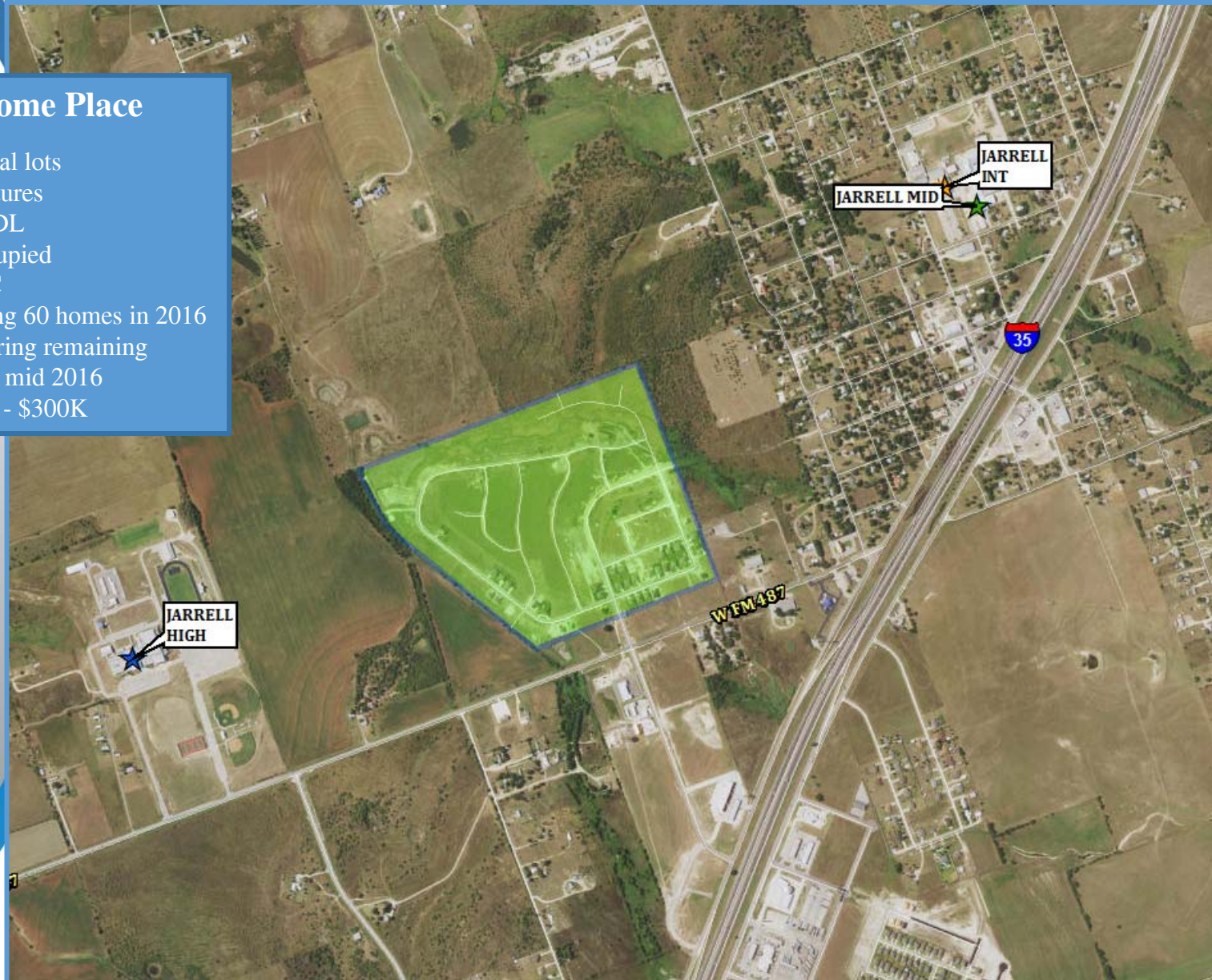


# Active Subdivision

Home Place

## Home Place

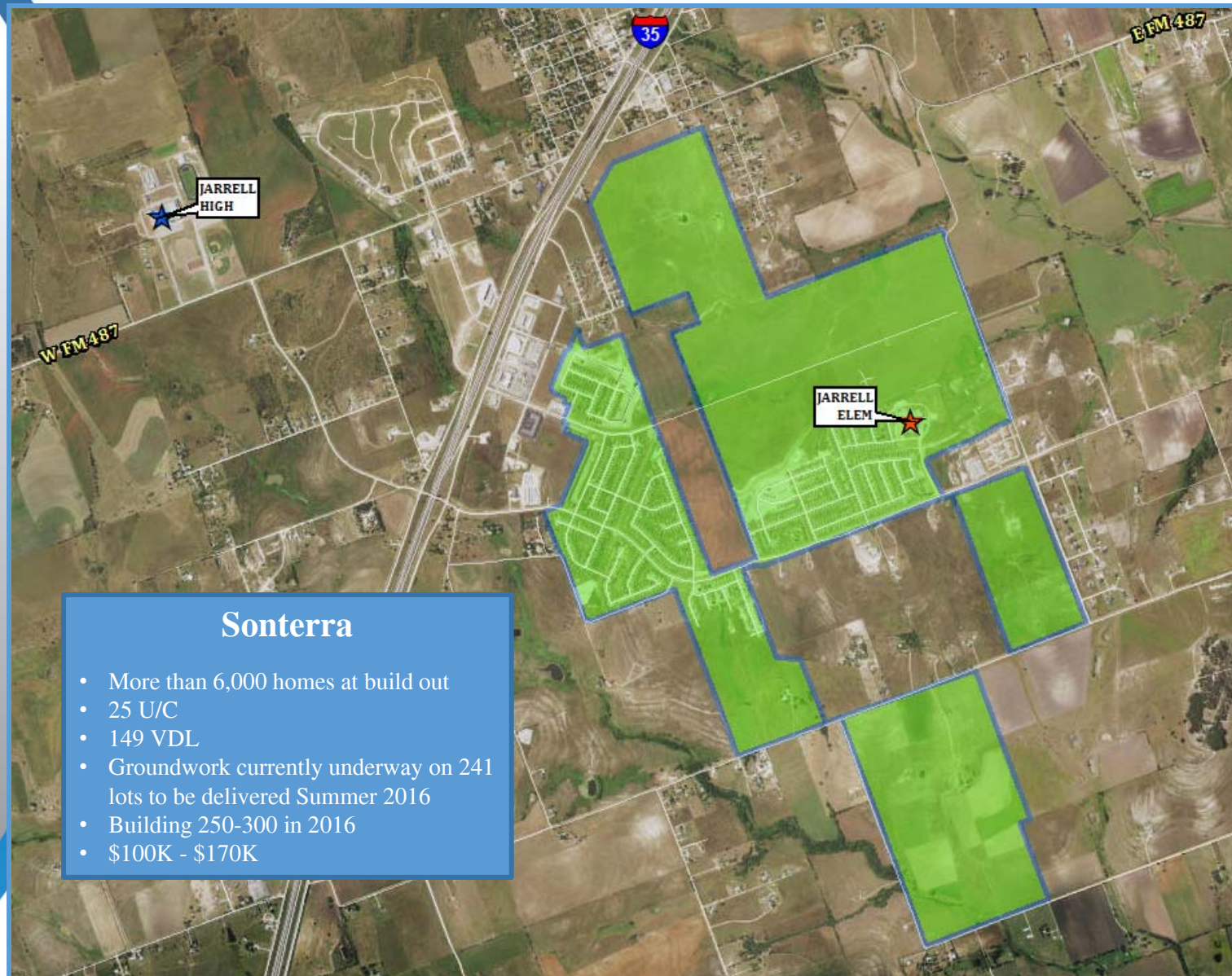
- 324 total lots
- 117 futures
- 105 VDL
- 77 occupied
- 11 U/C
- Building 60 homes in 2016
- Delivering remaining futures mid 2016
- \$200K - \$300K





# Active Development

Sonterra



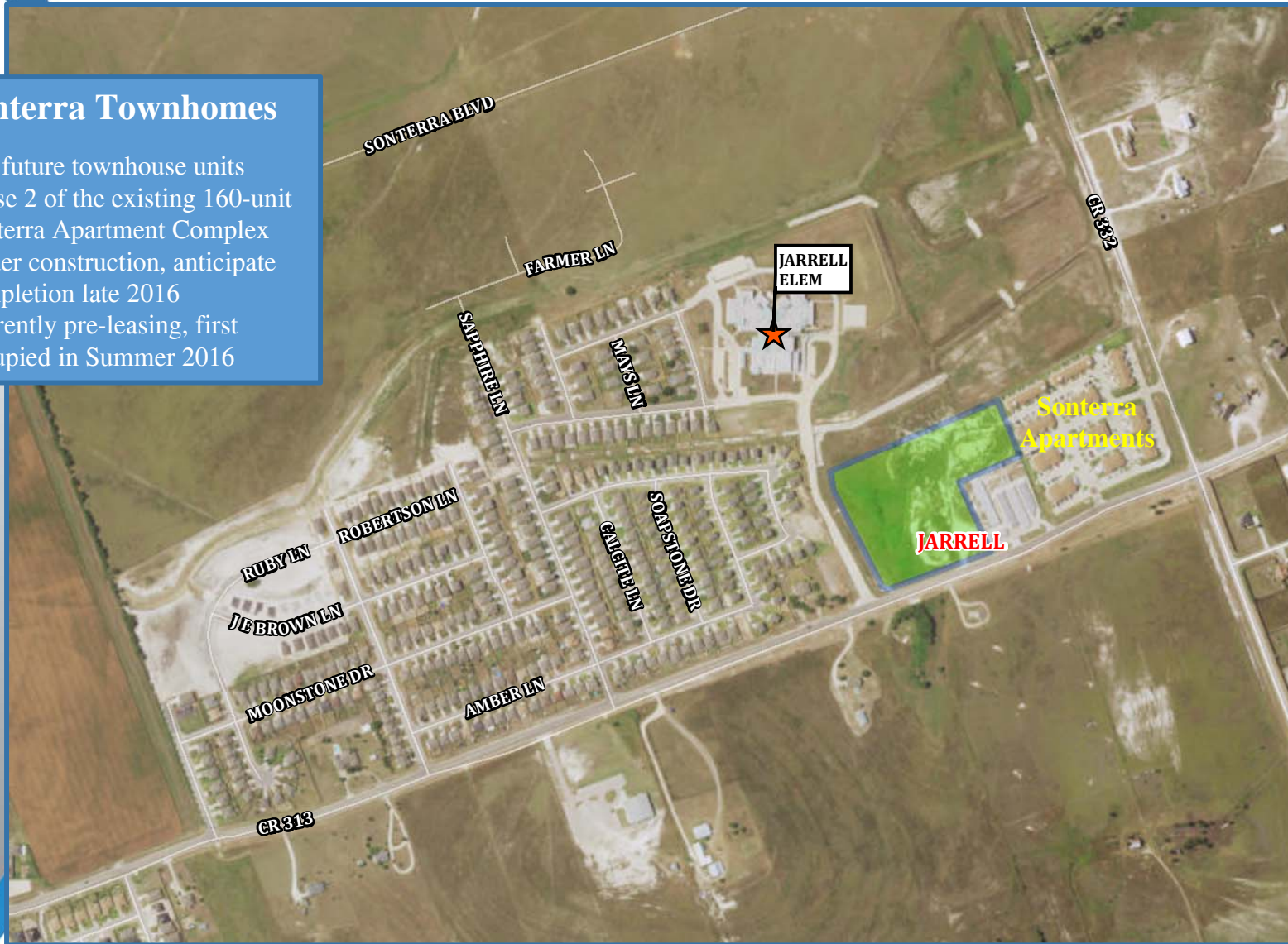


# Active Multifamily Development

## Sonterra Townhomes

### Sonterra Townhomes

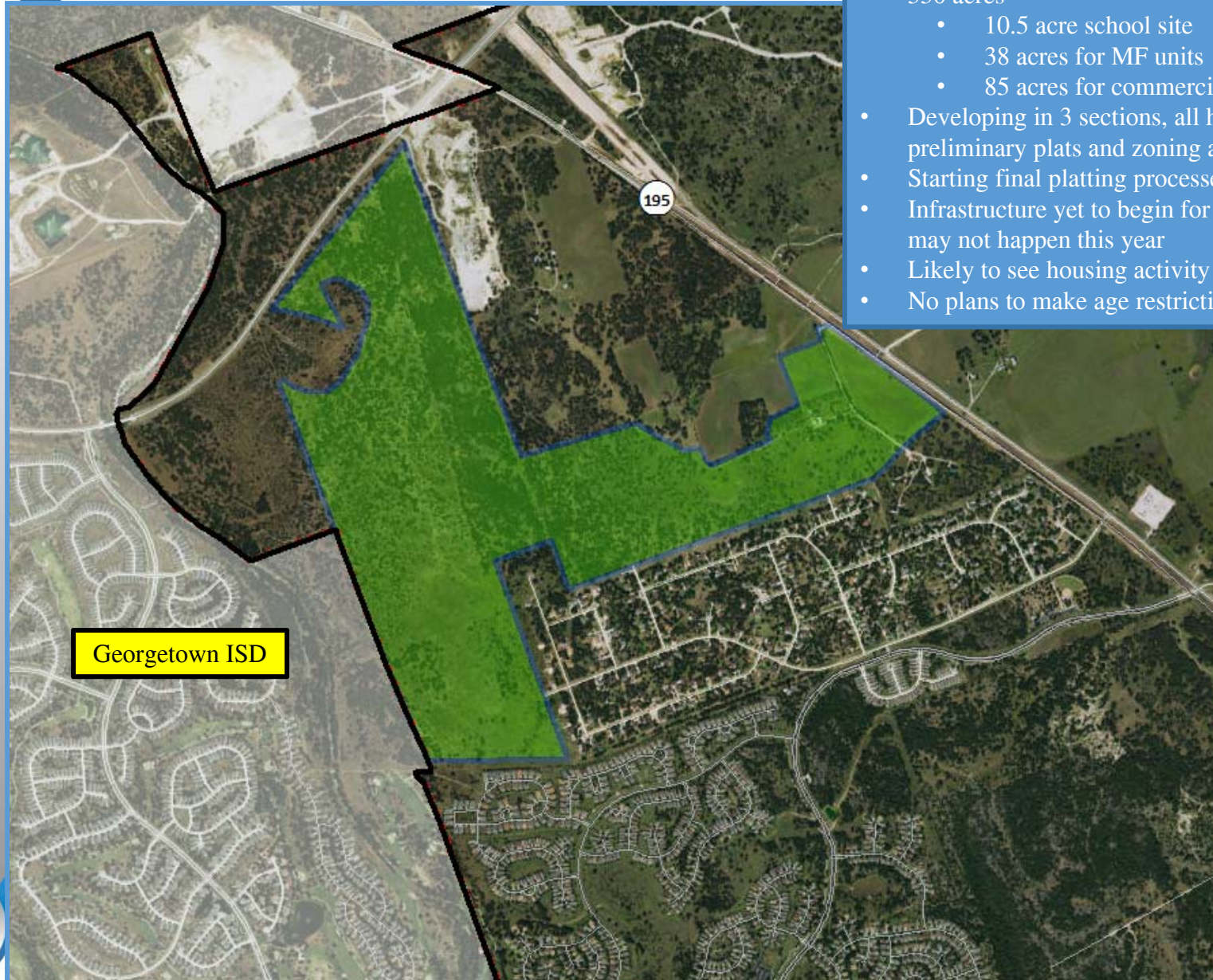
- 120 future townhouse units
- Phase 2 of the existing 160-unit Sonterra Apartment Complex
- Under construction, anticipate completion late 2016
- Currently pre-leasing, first occupied in Summer 2016





# Future Development

## Madison at Georgetown



### Madison at Georgetown

- 608 future SF lots
- 550 acres
  - 10.5 acre school site
  - 38 acres for MF units
  - 85 acres for commercial development
- Developing in 3 sections, all have preliminary plats and zoning approved
- Starting final platting processes
- Infrastructure yet to begin for delivering lots, may not happen this year
- Likely to see housing activity by 2019
- No plans to make age restrictions at this time





# Future Development

## Meadows of Donahoe Creek



### Meadows of Donahoe Creek

- 140 acres
  - 12 acres zoned commercial
  - 127 acres zoned agriculture
- 400 future single family homes
  - Phase 1 with 72 lots approved
- 150-300 possible multi-family units
- Administration issues have delayed development, no timeline for development at this time





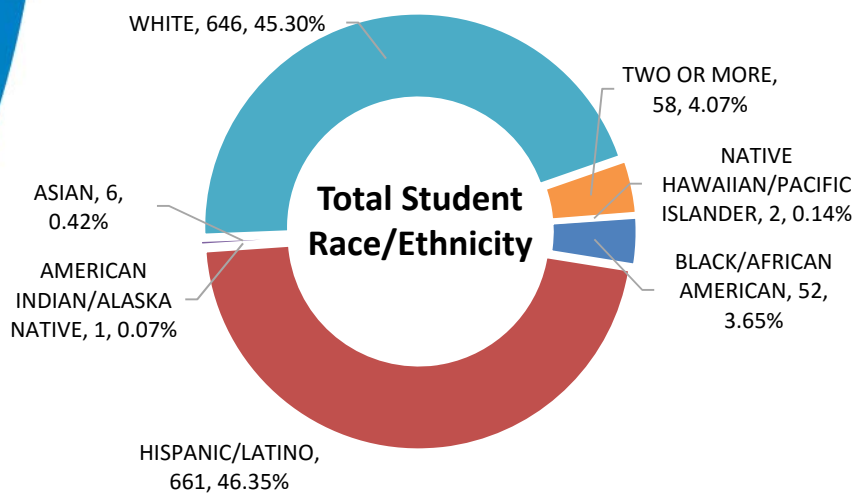
# Enrollment History

Year (Oct.)	EE/PK	K	1st	2nd	3rd	4th	5th	6th	7th	8th	9th	10th	11th	12th	Total	Total Growth	% Growth
2011/12	68	82	81	86	62	72	79	74	75	73	82	59	70	47	1,010		
2012/13	67	93	87	85	74	78	75	82	80	84	82	66	59	68	1,080	70	6.9%
2013/14	67	92	99	83	91	77	82	75	87	92	92	81	64	58	1,140	60	5.6%
2014/15	66	92	113	109	99	92	89	88	84	99	101	92	80	61	1,265	125	11.0%
2015/16	81	111	109	122	108	109	105	103	92	94	114	101	94	83	1,426	161	12.7%

\*Yellow box = largest grade per year  
\*Green box = second largest grade per year

## 2015/16 Student Race/Ethnicity Totals

Year (Oct.)	Total	Black or African American	%	Hispanic	%	American Indian or Alaska Native	%	Asian	%	White	%	Two or more races	%	Native Hawaiian/Other Pacific Islander	%
2011/12	1,010	29	2.9%	456	45.1%	2	0.2%	4	0.4%	484	47.9%	32	3.2%	3	0.3%
2012/13	1,080	31	2.9%	483	44.7%	2	0.2%	5	0.5%	517	47.9%	40	3.7%	2	0.2%
2013/14	1,140	35	3.1%	526	46.1%	0	0.0%	7	0.6%	525	46.1%	45	3.9%	2	0.2%
2014/15	1,265	48	3.8%	580	45.8%	0	0.0%	10	0.8%	572	45.2%	52	4.1%	3	0.2%
2015/16	1,426	52	3.6%	661	46.4%	1	0.1%	6	0.4%	646	45.3%	58	4.1%	2	0.1%



Year (Oct.)	Economically Disadvantaged	% ED
2011/12	600	59.4%
2012/13	665	61.6%
2013/14	711	62.4%
2014/15	738	58.3%
2015/16	833	58.4%





# Ten Year Forecast

## By Grade Level

Year (Oct.)	EE/PK	K	1st	2nd	3rd	4th	5th	6th	7th	8th	9th	10th	11th	12th	Total	Total Growth	% Growth
2011/12	68	82	81	86	62	72	79	74	75	73	82	59	70	47	1,010		
2012/13	67	93	87	85	74	78	75	82	80	84	82	66	59	68	1,080	70	6.9%
2013/14	67	92	99	83	91	77	82	75	87	92	92	81	64	58	1,140	60	5.6%
2014/15	66	92	113	109	99	92	89	88	84	99	101	92	80	61	1,265	125	11.0%
2015/16	81	111	109	122	108	109	105	103	92	94	114	101	94	83	1,426	161	12.7%
2016/17	81	128	131	118	137	119	125	122	114	106	112	123	106	94	1,616	190	13.3%
2017/18	81	141	154	157	130	153	137	139	133	132	125	118	125	104	1,829	213	13.2%
2018/19	81	162	155	169	173	143	167	152	152	149	158	123	117	123	2,024	195	10.7%
2019/20	81	184	181	175	187	191	162	187	166	167	176	154	122	115	2,248	224	11.1%
2020/21	81	175	202	197	207	207	210	180	201	183	197	172	152	120	2,484	236	10.5%
2021/22	81	189	196	218	222	229	229	222	193	216	217	193	170	149	2,724	240	9.7%
2022/23	81	204	204	213	240	246	255	241	239	212	255	211	191	167	2,959	235	8.6%
2023/24	81	212	218	221	229	266	272	269	259	261	250	248	209	187	3,182	223	7.5%
2024/25	81	214	229	236	238	259	295	287	295	282	308	243	246	205	3,418	236	7.4%
2025/26	81	223	231	248	254	265	287	311	315	323	335	300	241	241	3,655	237	6.9%

\*Yellow box = largest grade per year

\*Green box = second largest grade per year

- Jarrell ISD will enroll more than 2,000 students by 2018
- 5 year growth = 1,058 students
- 2020/21 enrollment = 2,484
- 10 year growth = 2,229 students
- 2025/26 enrollment = 3,655





# Ten Year Forecast

## By Campus

Campus	Current	ENROLLMENT PROJECTIONS									
	2015/16	2016/17	2017/18	2018/19	2019/20	2020/21	2021/22	2022/23	2023/24	2024/25	2025/26
Jarrell Elementary	531	458	533	567	621	655	684	702	732	760	783
Elementary Absolute Change	52	-73	75	34	54	34	29	18	30	28	23
Jarrell Intermediate School	214	381	420	483	540	624	680	741	767	792	806
Intermed. Absolute Change	33	167	39	63	57	84	56	61	26	25	14
Jarrell Middle School	288	341	403	452	519	563	630	691	788	863	948
Middle School Absolute Change	17	53	62	49	67	44	67	61	97	75	85
Jarrell High School	390	433	470	519	565	639	727	822	892	1,000	1,115
High School Absolute Change	58	43	37	49	46	74	88	95	70	108	115
Williamson County JJAEP	2	2	2	2	2	2	2	2	2	2	2
ALTERNATIVE SCHOOL TOTAL	3	3	3	3	3	3	3	3	3	3	3
<b>DISTRICT TOTALS</b>	<b>1,426</b>	<b>1,616</b>	<b>1,829</b>	<b>2,024</b>	<b>2,248</b>	<b>2,484</b>	<b>2,724</b>	<b>2,959</b>	<b>3,182</b>	<b>3,418</b>	<b>3,655</b>
District Absolute Change	161	190	213	195	224	236	240	235	223	236	237
District Percent Change	12.73%	13.32%	13.18%	10.66%	11.07%	10.50%	9.66%	8.63%	7.54%	7.42%	6.93%

- 3<sup>rd</sup> Grade moves to Intermediate School fall 2016
- Elementary exceeds 600 enrollment by 2019/20
- Intermediate exceeds 500 enrollment by 2019/20
- Middle exceeds 500 enrollment by 2019/20
- High School exceeds 600 by 2020/21







## Summary

- Austin has one of the lowest unemployment rates in the country, with a March 2016 unemployment rate of just 2.7%.
- Jarrell ISD has added more than 450 students in the last five years, a growth rate of 46.4%.
- The district had more than 200 new home closings in 2015, and is on pace to match or exceed that pace in 2016.
- JISD can expect an increase of approximately 1,050 students during the next 5 years.
- The district will experience a double digit growth rate annually for at least the next 5-6 years.
- 2020/21 enrollment projection= 2,484.
- Jarrell ISD is projected to have more than 3,600 students for the 2025/26 school year.

